

# Sydney College of English Accommodation Guide 2012



Sydney College of English  
35-39 Mountain St  
Broadway, NSW, 2007  
Australia  
Phone: 61 2 9281 5211  
Fax: 61 2 9281 5208  
Email: [english@sce.edu.au](mailto:english@sce.edu.au)

# 202 Broadway

202 Broadway , Broadway 2037 NSW



## BROADWAY ACCOMMODATION

15 nice and fresh rooms with extensive communal areas including a big kitchen.

## LOCAL ATTRACTIONS

This place is located in the suburb of Broadway, very close to the City where all the night life is going on with nice restaurants, cafes, night clubs and pubs. Our College is located just steps away.

**FURNISHEDPROPERTY.COM.AU**  
IT'S YOUR PLACE



Rates:  
Single room: \$265  
Single Deluxe: \$300  
Twin/Double (w/partner) \$175pp  
Triple (w/partner) \$150pp  
-Subject to availability  
Minimum stay is 4 weeks

No bond but the student will be required to leave cc details on arrival

Transport:  
2 minute walk to our College

Communal kitchen, shared areas and bathrooms, coin operated washing machines, linen provided

Internet available

On site managers.

Security Built In - Outdoor Area

For precise information please go to [www.furnishedproperty.com.au](http://www.furnishedproperty.com.au)



Sydney College of English  
35-39 Mountain St  
Broadway, NSW, 2007  
Australia  
Phone: 61 2 9281 5211  
Fax: 61 2 9281 5208  
Email: [english@sce.edu.au](mailto:english@sce.edu.au)

# 115 Surry Hills

115 Campbell Street - Surry Hills NSW 2010



## 115 SURRY HILLS GUESTHOUSE

115 Surry Hills Guesthouse is located in a vibrant suburb that provides all sort of opportunity for shopping, dining and tourist attraction around the area.

There is a large communal kitchen and dining area to relax in, a large flat TV screen mounted on the wall with cable TV.

The student will count with a fully equipped kitchen with your own food cupboard and space in the fridge.

Don't forget that you can enjoy and relax on the roof top courtyard with a BBQ area.



### Rates:

|                      |       |
|----------------------|-------|
| Single               | \$320 |
| Twin share           | \$230 |
| Double room          | \$440 |
| Girl four share room | \$220 |

Minimum 4 week stay  
\$30 Cleaning fee (one off payment)\*  
+ 1 week refundable bond  
\*If less than 4 weeks it will be \$100

Transport:  
10 minute walk

Internet free at reception  
From \$10 per week for 800Mbs

Meals:  
Facilities are available.

Laundry:  
Facilities are available  
Linen and towels provided

For precise information please go to  
[www.115surryhills.com](http://www.115surryhills.com)



Sydney College of English  
35-39 Mountain St  
Broadway, NSW, 2007  
Australia  
Phone: 61 2 9281 5211  
Fax: 61 2 9281 5208  
Email: [english@sce.edu.au](mailto:english@sce.edu.au)

# 55 Yurong Street Guesthouse

55 Yurong Street - Darlinghurst NSW 2010



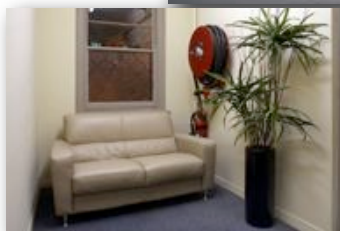
## 55 YURONG STREET GUESTHOUSE

55 Yurong Street Guesthouse is located in a vibrant suburb that provides all sort of opportunity for shopping, dining and tourist attraction along Glebe Point Road.

There is a large communal kitchen and dining area to relax in, a large flat TV screen mounted on the wall with cable TV.

The student will count with a fully equipped kitchen with your own food cupboard and space in the fridge.

55 Yurong Guest House



### Rates:

|                      |       |
|----------------------|-------|
| Single               | \$320 |
| Twin share           | \$230 |
| Double room          | \$440 |
| Girl four share room | \$220 |

Minimum 4 week stay  
\$30 Cleaning fee (one off payment)\*  
+ 1 week refundable bond  
\*If less than 4 weeks it will be \$100

Transport:  
25 minute walk or 10 minute bus ride

Internet free at reception area  
From \$10 per week for 800Mbs

Meals:  
Facilities are available.

Laundry:  
Facilities are available  
Linen and towels provided

For precise information please go to  
[www.55yurongstreet.com](http://www.55yurongstreet.com)



Sydney College of English  
35-39 Mountain St  
Broadway, NSW, 2007  
Australia  
Phone: 61 2 9281 5211  
Fax: 61 2 9281 5208  
Email: [english@sce.edu.au](mailto:english@sce.edu.au)

# Glebe Guesthouse

96 Glebe Point Road - Glebe NSW 2037



## GLEBE GUESTHOUSE

Glebe Guesthouse is located in a vibrant suburb that provides all sort of opportunity for shopping, dining and tourist attraction along Glebe Point Road.

There is a large communal kitchen and dining area to relax in, a large flat TV screen mounted on the wall with cable TV.

The student will count with a fully equipped kitchen with your own food cupboard and space in the fridge.

Don't forget that you can enjoy and relax on the roof top courtyard with a BBQ area.



### Rates:

|                      |       |
|----------------------|-------|
| Single               | \$320 |
| Twin share           | \$230 |
| Double room          | \$440 |
| Girl four share room | \$220 |

Minimum 4 week stay  
\$30 Cleaning fee (one off payment)\*  
+ 1 week refundable bond  
\*If less than 4 weeks it will be \$100

Transport:  
10 minute walk

Internet free at Reception  
From \$10 per week for 800Mbs

Meals:  
Facilities are available.

Laundry:  
Facilities are available  
Linen and towels provided

For precise information please go to  
[www.96glebe.com](http://www.96glebe.com)



Sydney College of English  
35-39 Mountain St  
Broadway, NSW, 2007  
Australia  
Phone: 61 2 9281 5211  
Fax: 61 2 9281 5208  
Email: [english@sce.edu.au](mailto:english@sce.edu.au)

# Empire Hotel Accommodation

103A Parramatta Road, Annandale NSW 2038



## EMPIRE HOTEL

20 bedrooms split over two levels with shared common room and kitchen.

All rooms come fully furnished with studio style set up. They can also be set up as twin or double shared, includes sofa's, LCD televisions and storage facilities.

**FURNISHEDPROPERTY.COM.AU**  
IT'S YOUR PLACE

## LOCAL ATTRACTIONS

Located only 5 km's from the CBD of Sydney. The bus stops just around the corner from the property and is only a 10 minute ride to the city, Sydney, universities and our College.



Rates:  
Single room: \$265  
Single Deluxe: \$300  
Twin/Double (w/partner) \$175pp  
Triple (w/partner) \$150pp  
-Subject to availability  
Minimum stay is 4 weeks

No bond but the student will be required to leave cc details on arrival

Transport:  
30 minute walk or 10 minute bus ride to our College

Communal kitchen, shared areas and bathrooms, coin operated washing machines, linen provided

Internet available

On site managers.

Security Built In - Outdoor Area

For precise information please go to [www.furnishedproperty.com.au](http://www.furnishedproperty.com.au)



Sydney College of English  
35-39 Mountain St  
Broadway, NSW, 2007  
Australia  
Phone: 61 2 9281 5211  
Fax: 61 2 9281 5208  
Email: [english@sce.edu.au](mailto:english@sce.edu.au)

# Forest Lodge Student Guesthouse

117 Arundel Street - Glebe NSW 2037



## FOREST LODGE

Forest Lodge is perfect for students, who are traveling alone, with a partner or just friends as it is in a secure building with an onsite manager and is located in the heart of Glebe. Each bedroom features a TV, DVD player, bar fridge, comfortable beds and wardrobe space. The commercial common kitchen features four cookers, dining area and ample space to prepare meals. Below the accommodation there is a cafe, bar and bistro, but more importantly, Forest Lodge contains a spacious common room for relaxing and meeting new people.

## LOCAL ATTRACTIONS

Forest Lodge is located in the trendy area of Glebe and is surrounded by boutique clothing stores, Broadway shopping center, movie cinemas and fantastic food.

**FURNISHEDPROPERTY.COM.AU**  
IT'S YOUR PLACE

### Rates:

|                          |         |
|--------------------------|---------|
| Single room:             | \$265   |
| Single Deluxe:           | \$300   |
| Twin/Double (w/partner)  | \$175pp |
| Triple (w/partner)       | \$150pp |
| -Subject to availability |         |
| Minimum stay is 4 weeks  |         |

No bond but the student will be required to leave cc details on arrival

Transport:  
15 minute walk to our College

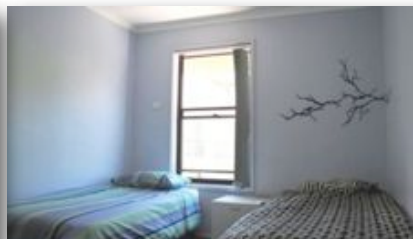
Communal kitchen, shared areas and bathrooms, coin operated washing machines, linen provided

Internet available

On site managers.

Security Built In - Outdoor Area

For precise information please go to [www.furnishedproperty.com.au](http://www.furnishedproperty.com.au)



Sydney College of English  
35-39 Mountain St  
Broadway, NSW, 2007  
Australia  
Phone: 61 2 9281 5211  
Fax: 61 2 9281 5208  
Email: [english@sce.edu.au](mailto:english@sce.edu.au)

# Gracelands Student Guesthouse

461 Cleveland Street - Surry Hills NSW 2010



## GRACELANDS

Gracelands is a secure building with an onsite manager located in the trendy suburb of Surry Hills. This accommodation has a friendly and secure environment where students can make life-long friends. This guesthouse features a large common room with cable television and a large section of books for you to read and relax. The sunny courtyard contains BBQ facilities and entertaining areas for students to socialise with other guests.

**FURNISHEDPROPERTY.COM.AU**  
IT'S YOUR PLACE

## LOCAL ATTRACTIONS

Gracelands is nearby to the main streets of Surry Hills, which have excellent transport links, cafes, library facilities, restaurants, bars and shopping centres. Down the street you have a variety of cafes, bars and small boutique shops nearing Crown Street.



### Rates:

|                          |         |
|--------------------------|---------|
| Single room:             | \$265   |
| Single Deluxe:           | \$300   |
| Twin/Double (w/partner)  | \$175pp |
| Triple (w/partner)       | \$150pp |
| -Subject to availability |         |
| Minimum stay is 4 weeks  |         |

No bond but the student will be required to leave cc details on arrival

Transport:  
20 minute walk to our College

Communal kitchen, shared areas and bathrooms, coin operated washing machines, linen provided

Internet available

On site managers.

Security Built In - Outdoor Area

For precise information please go to [www.furnishedproperty.com.au](http://www.furnishedproperty.com.au)



Sydney College of English  
35-39 Mountain St  
Broadway, NSW, 2007  
Australia  
Phone: 61 2 9281 5211  
Fax: 61 2 9281 5208  
Email: [english@sce.edu.au](mailto:english@sce.edu.au)

# Grosvenor Lodge

153 Phillip Street - Waterloo NSW 2017



## GROSVENOR LODGE

Refined secure student accommodation facility located in Waterloo within walking distance from Central Station and trendy Surry Hills.

The lodge provides some meals and has a nice terrace with bbq facilities, and counts with communal kitchen, laundry and recreational facilities.



### Rates:

|                         |       |
|-------------------------|-------|
| Single room             | \$220 |
| With Breakfast & Dinner | \$295 |

### Key and room bond:

One week of accommodation  
Refundable at the end of stay

### Transport:

6 minute bus ride from Central

### Kitchen & Laundry:

Facilities are available

### Internet:

Wireless Internet available

### Meals:

Continental Breakfast and dinner  
included

### Extras:

Bed linen and towels provided

For precise information please go to  
[www.grosvenorhotel.com.au](http://www.grosvenorhotel.com.au)



Sydney College of English  
35-39 Mountain St  
Broadway, NSW, 2007  
Australia  
Phone: 61 2 9281 5211  
Fax: 61 2 9281 5208  
Email: [english@sce.edu.au](mailto:english@sce.edu.au)

# Jack's Place

39A ELIZABETH BAY ROAD , POTTS POINT



## ELIZABETH BAY ACCOMMODATION

42 nice and fresh rooms with an on site manager and with extensive communal areas including guest lounge and commercial grade kitchen.

**FURNISHEDPROPERTY.COM.AU**  
IT'S YOUR PLACE

## LOCAL ATTRACTIONS

This place is located in the heart of Sydney, very close to the City and Sydney Harbour and where all the night life is going on with nice restaurants, cafes, night clubs and pubs.



Rates:  
Single room: \$265  
Single Deluxe: \$300  
Twin/Double (w/partner) \$175pp  
Triple (w/partner) \$150pp  
-Subject to availability  
Minimum stay is 4 weeks

No bond but the student will be required to leave cc details on arrival

Transport:  
20 minute bus ride to our College

Communal kitchen, shared areas and bathrooms, coin operated washing machines, linen provided

Internet available

On site managers.

Security Built In - Outdoor Area

For precise information please go to [www.furnishedproperty.com.au](http://www.furnishedproperty.com.au)



Sydney College of English  
35-39 Mountain St  
Broadway, NSW, 2007  
Australia  
Phone: 61 2 9281 5211  
Fax: 61 2 9281 5208  
Email: [english@sce.edu.au](mailto:english@sce.edu.au)

# Park Lodge Student Guesthouse

747 South Dowling Street - Surry Hills NSW 2010



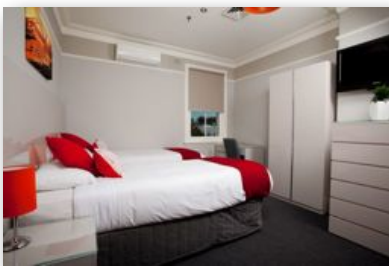
## PARK LODGE

Park Lodge is a great living environment where guests can make new friends whilst enjoying the privacy of a room with an ensuite bathroom. It is a secure building with an onsite manager to ensure guests have a safe and happy stay. It offers a new and modern stainless steel kitchen, outdoor courtyard, BBQ area and a common room with cable television. This guesthouse is a perfect place for tenants to relax and socialise.

**FURNISHEDPROPERTY.COM.AU**  
IT'S YOUR PLACE

## LOCAL ATTRACTIONS

This boutique styled guesthouse is in a great location being close to the vibrant areas of Surry Hills, Sydney Parks and the Moore Park Entertainment precinct. Park Lodge is near the main streets of Surry Hills, which have excellent transport links, cafes, library facilities, restaurants, bars and shopping centers.



### Rates:

|                          |         |
|--------------------------|---------|
| Single room:             | \$315   |
| Twin/Double (w/partner)  | \$190pp |
| Triple (w/partner)       | \$175pp |
| All rooms have ensuite   |         |
| -Subject to availability |         |
| Minimum stay is 4 weeks  |         |

No bond but the student will be required to leave cc details on arrival

Transport:  
20 minute walk to our College

Communal kitchen, shared areas, coin operated washing machines, linen provided

Internet available

On site managers.

Security Built In - Outdoor Area

For precise information please go to [www.furnishedproperty.com.au](http://www.furnishedproperty.com.au)



Sydney College of English  
35-39 Mountain St  
Broadway, NSW, 2007  
Australia  
Phone: 61 2 9281 5211  
Fax: 61 2 9281 5208  
Email: [english@sce.edu.au](mailto:english@sce.edu.au)

# Sinclairs Bondi

27 Paul Street, Bondi NSW 2026

11 Bennett Street, Bondi NSW 2026



## SINCLAIRS BONDI

This place offers budget accommodation in Sydney and specializes in affordable accommodation with breakfast within a 20 minute bus ride from the Sydney CBD, a short walk from the beach and shops, and only 30 minutes from Sydney international airport.

Sinclairs offers the necessary facilities to ensure your stay is memorable and enjoyable. They offer a communal kitchen on each floor, laundry facilities and a tasty breakfast in order for you to relax in Sydney.



Rates:

|                              |       |
|------------------------------|-------|
| Single room                  | \$338 |
| Twin share (with partner)    | \$238 |
| Triple share (with partners) | \$228 |
| Dorm room * 4 w/partners     | \$218 |
| Private (up to 2)            | \$575 |

Important: Minimum 4 week stay

Linen and towels are provided

Key and room bond:  
Not applicable

Transport:  
30 minute bus ride from SCE

Kitchen & Laundry:  
Facilities are available

Internet:  
Wireless Internet available

Breakfast included

For precise information please go to  
[www.sinclairsbondi.com.au](http://www.sinclairsbondi.com.au)



Sydney College of English  
35-39 Mountain St  
Broadway, NSW, 2007  
Australia  
Phone: 61 2 9281 5211  
Fax: 61 2 9281 5208  
Email: [english@sce.edu.au](mailto:english@sce.edu.au)

# Sinclair's Apartments

145 to 149 Foveaux Street - Surry Hills NSW 2010



## SINCLAIR'S APARTMENTS

Sinclair's Apartments are located within walking distance to the College and Sydney CBD and they are the ideal location to self cater whilst studying at Sydney College of English. Linen and towels are provided and cleaned regularly.

## LOCAL ATTRACTIONS

Chinatown - some of Sydney's best and cheapest restaurants are located in Chinatown. Along with great shopping areas which include Market City and Paddy's Market.



### Rates:

|             |          |
|-------------|----------|
| Single Room | \$310    |
| Twin Room   | \$217.25 |

### Transport:

Within walking distance to SCE

### Meals:

Lite continental breakfast included + Self catering

Shared kitchen

### Services:

Rooms are cleaned weekly  
Fresh linen and towels provided  
Internet included

### Bathrooms:

There are shared bathroom and toilet facilities.

No deposit required.

For precise information please go to [www.sinclairs.com.au](http://www.sinclairs.com.au)



Sydney College of English  
35-39 Mountain St  
Broadway, NSW, 2007  
Australia  
Phone: 61 2 9281 5211  
Fax: 61 2 9281 5208  
Email: [english@sce.edu.au](mailto:english@sce.edu.au)

# Sinclair's City Hostel

510 Cleveland Street - Surry Hills NSW 2010



## SINCLAIR'S CITY HOSTEL

Sinclair's City Hostel is located within walking distance to the College and Sydney CBD. There is a selection of room types available. Breakfast and internet are included in the rates. A rooftop area with BBQ is open until late. Linen and towels are provided and cleaned regularly.



## LOCAL ATTRACTIONS

Chinatown - some of Sydney's best and cheapest restaurants are located in Chinatown. Along with great shopping areas which include Market City and Paddy's Market.



### Rates:

|             |          |
|-------------|----------|
| Single Room | \$310    |
| Twin Room   | \$217.25 |

### Transport:

Within walking distance to SCE

### Meals:

A light breakfast is included.

### Kitchen:

There is a shared kitchen

### Services:

Rooms are cleaned daily  
Towels are washed twice a week  
Linen are washed once a week  
Internet is included

### Bathrooms:

There are shared bathroom and toilet facilities.

No deposit applicable

For precise information please go to [www.sinclairs.com.au](http://www.sinclairs.com.au)



Sydney College of English  
35-39 Mountain St  
Broadway, NSW, 2007  
Australia  
Phone: 61 2 9281 5211  
Fax: 61 2 9281 5208  
Email: [english@sce.edu.au](mailto:english@sce.edu.au)

# South Dowling Student Guesthouse

553 South Dowling Street - Surry Hills NSW 2010



## SOUTH DOWLING

South Dowling is a secure building with an onsite manager and is located between Surry Hills and Waterloo. The original charm of this renovated house make you feel right at home as soon as you walk in. The high ceilings, architraves and original fireplaces add to the character of this property. Room layouts vary throughout with some rooms having their own private balcony. All rooms have sinks, TV and DVD and are set up as studio style rooms with polished flooring throughout. There is a communal kitchen and courtyard to share.

## LOCAL ATTRACTIONS

South Dowling is nearby to the main streets of Surry Hills, which have excellent transport links, cafes, library facilities, restaurants, bars and shopping centres.

**FURNISHEDPROPERTY.COM.AU**  
IT'S YOUR PLACE

### Rates:

|                          |         |
|--------------------------|---------|
| Single room:             | \$265   |
| Single Deluxe:           | \$300   |
| Twin/Double (w/partner)  | \$175pp |
| Triple (w/partner)       | \$150pp |
| -Subject to availability |         |
| Minimum stay is 4 weeks  |         |

No bond but the student will be required to leave cc details on arrival

Transport:  
2 minute walk to our College

Communal kitchen, shared areas and bathrooms, coin operated washing machines, linen provided

Internet available

On site managers.

Security Built In - Outdoor Area

For precise information please go to [www.furnishedproperty.com.au](http://www.furnishedproperty.com.au)



Sydney College of English  
35-39 Mountain St  
Broadway, NSW, 2007  
Australia  
Phone: 61 2 9281 5211  
Fax: 61 2 9281 5208  
Email: [english@sce.edu.au](mailto:english@sce.edu.au)

# South Dowling Student Guesthouse



773 South Dowling Street - Surry Hills NSW 2010

## SOUTH DOWLING

South Dowling is a secure building with an onsite manager and is located between Surry Hills and Waterloo. The guesthouse has nine bedrooms, five bathrooms and a large communal kitchen area. Each room contains wardrobe space, a TV and DVD player. Students can also unwind and relax whilst watching cable TV in the common area. Hang out with your friends on the spacious rooftop terrace with BBQ facilities and outdoor furniture whilst enjoying the fresh air and views.

**FURNISHEDPROPERTY.COM.AU**  
IT'S YOUR PLACE

## LOCAL ATTRACTIONS

South Dowling is nearby to the main streets of Surry Hills, which have excellent transport links, cafes, library facilities, restaurants, bars and shopping centres.



Rates:  
Single room: \$265  
Single Deluxe: \$300  
Twin/Double (w/partner) \$175pp  
Triple (w/partner) \$150pp  
-Subject to availability  
Minimum stay is 4 weeks

No bond but the student will be required to leave cc details on arrival

Transport:  
2 minute walk to our College

Communal kitchen, shared areas and bathrooms, coin operated washing machines, linen provided

Internet available

On site managers.

Security Built In - Outdoor Area

For precise information please go to [www.furnishedproperty.com.au](http://www.furnishedproperty.com.au)



Sydney College of English  
35-39 Mountain St  
Broadway, NSW, 2007  
Australia  
Phone: 61 2 9281 5211  
Fax: 61 2 9281 5208  
Email: [english@sce.edu.au](mailto:english@sce.edu.au)

# Unilodge

Corner Bay Street & Broadway - Broadway NSW 2007



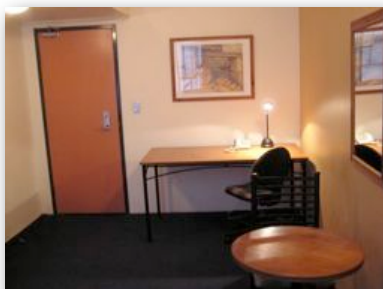
## UNILODGE

Unilodge is a 3 1/2 star student accommodation facility on Broadway, approximately 2 minutes walks to SCE. Unilodge has a wide variety of rooms available including single, twin and double self contained furnished apartments. Each apartment has its own bathroom, bar fridge, microwave, cutlery and crockery (to be collected from SCE reception). There is a communal kitchen, spa, roof-top BBQ area and laundry facilities. On the ground floor there is a convenience store and a selection of restaurants.



## LOCAL ATTRACTIONS

Broadway Shopping Centre - one of Sydney's major shopping centers is located across the street from Unilodge.



### Rates:

Next Page

For other types of rooms please confirm with SCE

### Transport:

2 minute walk from SCE

### Meals:

Self Catering

There is a shared kitchen for student use

### Bathrooms:

Each apartment has ensuite bathroom

Towels and linen are not provided

### Deposit:

Not applicable

On first day at SCE the student needs to provide Credit Card details

Prices valid 1/1/12 - 31/12/12

For precise information please go to [www.unilodge.com.au](http://www.unilodge.com.au)



Sydney College of English  
35-39 Mountain St  
Broadway, NSW, 2007  
Australia  
Phone: 61 2 9281 5211  
Fax: 61 2 9281 5208  
Email: [english@sce.edu.au](mailto:english@sce.edu.au)

# Unilodge

Corner Bay Street & Broadway - Broadway NSW 2007



## UNILODGE RATES

### Sydney College of English

#### Unilodge prices 2012 (weekly rates)

Amounts are what it would be per week depending on how many weeks is the stay

##### SINGLE ROOM WITHOUT AIR CONDITIONING

|        |                |                |                |                |                |                |                |
|--------|----------------|----------------|----------------|----------------|----------------|----------------|----------------|
| Small  | 1 week         | 2 weeks        | 3 weeks        | 4 weeks        | 5 weeks        | 6 weeks        | 7 weeks        |
|        | <b>x \$485</b> | <b>x \$460</b> | <b>x \$440</b> | <b>x \$420</b> | <b>x \$390</b> | <b>x \$380</b> | <b>x \$375</b> |
| Medium | 8 weeks        | 9 weeks        | 10 weeks       | 11 weeks       | 12 weeks       | 13 weeks       | add. Week      |
|        | <b>x \$370</b> | <b>x \$370</b> | <b>x \$365</b> | <b>x \$365</b> | <b>x \$360</b> | <b>x \$360</b> | <b>x \$360</b> |
| Large  | 1 week         | 2 weeks        | 3 weeks        | 4 weeks        | 5 weeks        | 6 weeks        | 7 weeks        |
|        | <b>x \$506</b> | <b>x \$490</b> | <b>x \$455</b> | <b>x \$445</b> | <b>x \$415</b> | <b>x \$400</b> | <b>x \$395</b> |
| Medium | 8 weeks        | 9 weeks        | 10 weeks       | 11 weeks       | 12 weeks       | 13 weeks       | add. Week      |
|        | <b>x \$380</b> | <b>x \$380</b> | <b>x \$375</b> | <b>x \$375</b> | <b>x \$375</b> | <b>x \$375</b> | <b>x \$375</b> |
| Large  | 1 week         | 2 weeks        | 3 weeks        | 4 weeks        | 5 weeks        | 6 weeks        | 7 weeks        |
|        | <b>x \$506</b> | <b>x \$490</b> | <b>x \$455</b> | <b>x \$445</b> | <b>x \$415</b> | <b>x \$400</b> | <b>x \$395</b> |
| Medium | 8 weeks        | 9 weeks        | 10 weeks       | 11 weeks       | 12 weeks       | 13 weeks       | add. Week      |
|        | <b>x \$390</b> | <b>x \$390</b> | <b>x \$390</b> | <b>x \$385</b> | <b>x \$385</b> | <b>x \$385</b> | <b>x \$385</b> |

##### SINGLE ROOM WITH AIR CONDITIONING

|        |                |                |                |                |                |                |                |
|--------|----------------|----------------|----------------|----------------|----------------|----------------|----------------|
| Small  | 1 week         | 2 weeks        | 3 weeks        | 4 weeks        | 5 weeks        | 6 weeks        | 7 weeks        |
|        | <b>x \$520</b> | <b>\$500</b>   | <b>x \$500</b> | <b>x \$460</b> | <b>x \$430</b> | <b>x \$410</b> | <b>x \$400</b> |
| Medium | 8 weeks        | 9 weeks        | 10 weeks       | 11 weeks       | 12 weeks       | 13 weeks       | add. Week      |
|        | <b>x \$400</b> | <b>x \$395</b> | <b>x \$390</b> | <b>x \$390</b> | <b>x \$390</b> | <b>x \$390</b> | <b>x \$390</b> |
| Large  | 1 week         | 2 weeks        | 3 weeks        | 4 weeks        | 5 weeks        | 6 weeks        | 7 weeks        |
|        | <b>x \$540</b> | <b>x \$520</b> | <b>x \$500</b> | <b>x \$480</b> | <b>x \$450</b> | <b>x \$430</b> | <b>x \$420</b> |
| Medium | 8 weeks        | 9 weeks        | 10 weeks       | 11 weeks       | 12 weeks       | 13 weeks       | add. Week      |
|        | <b>x \$420</b> | <b>x \$415</b> | <b>x \$410</b> | <b>x \$410</b> | <b>x \$410</b> | <b>x \$410</b> | <b>x \$410</b> |
| Large  | 1 week         | 2 weeks        | 3 weeks        | 4 weeks        | 5 weeks        | 6 weeks        | 7 weeks        |
|        | <b>x \$550</b> | <b>x \$530</b> | <b>x \$515</b> | <b>x \$505</b> | <b>x \$500</b> | <b>x \$480</b> | <b>x \$470</b> |
| Medium | 8 weeks        | 9 weeks        | 10 weeks       | 11 weeks       | 12 weeks       | 13 weeks       | add. Week      |
|        | <b>x \$460</b> | <b>x \$450</b> | <b>x \$440</b> | <b>x \$430</b> | <b>x \$420</b> | <b>x \$420</b> | <b>x \$420</b> |

#### IMPORTANT

Prices are valid from 01/01/2012 to 31/12/2012

All prices are in AUD and per person

All prices are subject to availability

No bond required but Credit Card details will be required at first day SCE

Double-twin available on request - bookings require a partner

Welcome Package available at SCE upon arrival



Sydney College of English  
 35-39 Mountain St  
 Broadway, NSW, 2007  
 Australia  
 Phone: 61 2 9281 5211  
 Fax: 61 2 9281 5208  
 Email: english@sce.edu.au

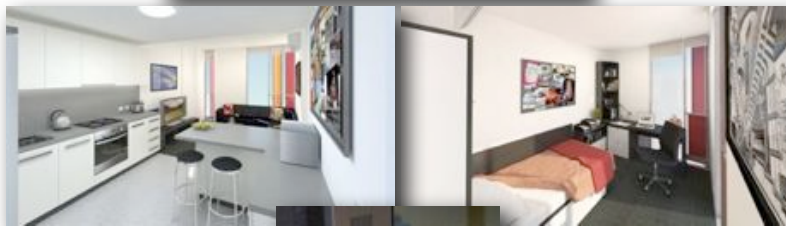
# Urbanest

83 Quay Street, Haymarket, Sydney



## URBANEST

Australia's oldest, largest and most diverse city, Sydney offers students the perfect lifestyle with arts, sports, shopping, a beautiful harbour and a vibrant café culture to enjoy. Urbanest Quay Street is designed specifically with your lifestyle in mind so you can have independence as you want it and support as you need it. The building's expansive social areas and shared apartments mean you will never be short of space to relax or catch-up with friends whilst also having the privacy of your own room for when you want to study.



Rates:  
\$389 for more than 8 weeks  
\$415 for less than 8 weeks  
\$365 for more than 6 months  
Subject to Availability

Bond is two weeks of rent and it has to be paid by the student upon arrival.

\*Important:  
For the confirmation of the booking at Urbanest the student requires to pay the full amount.  
If the student cancels before arriving a two week fee will be taken. If it is during the stay full fees will be kept.

Transport: 8 minute walk from SCE

Meals: self Catering / shared kitchen

Ensuite bathrooms in every room  
Towels and linen are provided.

1 GB Internet free per month

For precise information please go to [www.urbanest.com.au](http://www.urbanest.com.au)



Sydney College of English  
35-39 Mountain St  
Broadway, NSW, 2007  
Australia  
Phone: 61 2 9281 5211  
Fax: 61 2 9281 5208  
Email: [english@sce.edu.au](mailto:english@sce.edu.au)